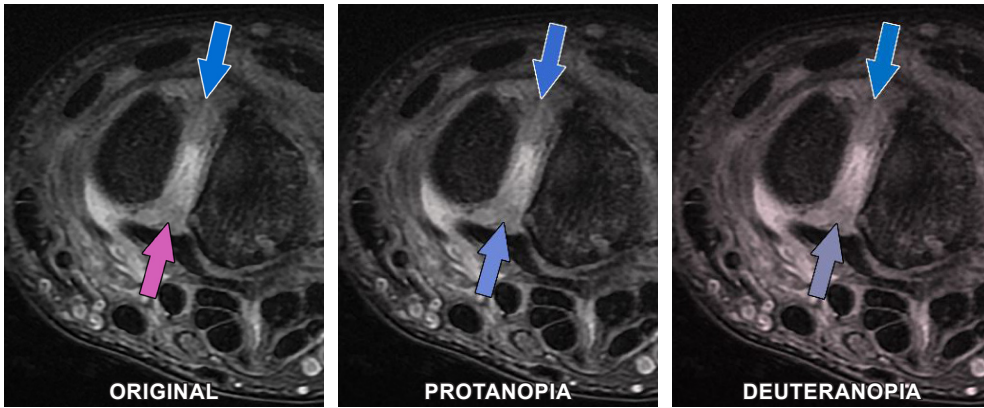
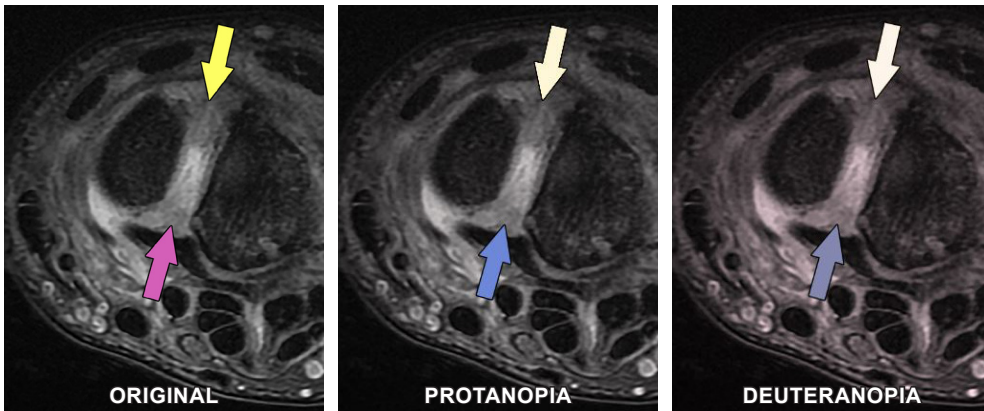


## Color Blindness Accessibility



If not for the different color outlines on the arrows, viewers with protanopia or deuteranopia may have a difficult time discerning between the two arrows.

The color choices in the original images should be reconsidered.

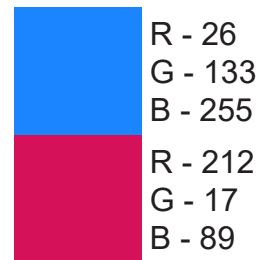
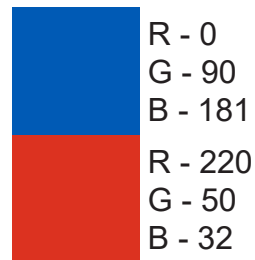
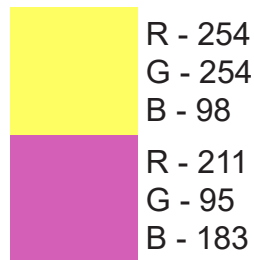
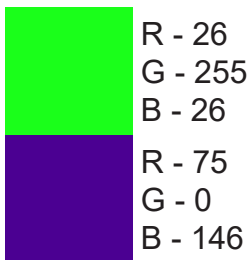
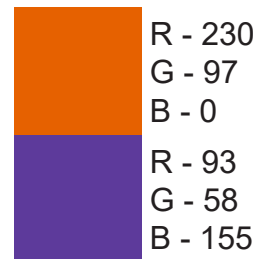
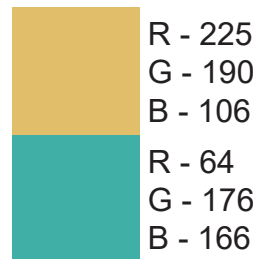
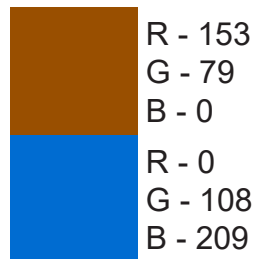
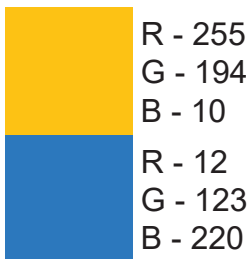


While the colors are not as striking, they are easily discernible even when sharing the same color outline.

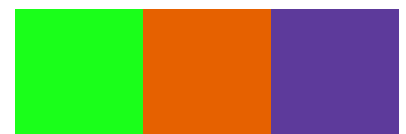
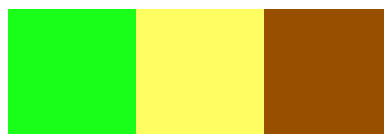
The color choices in the original images are ok for use.



Try using these color combinations when using more than a single color



When you need more than a pair, try these combinations from the palette above



To see how your images may be interpreted due to color blindness, view your image in this color blindness simulator: <https://www.color-blindness.com/coblis-color-blindness-simulator/>

The color palette is from <https://davidmathlogic.com/colorblind>